

# VAJRA

## HD ROCKBREAKERS FOR EVERY NEED



[ FOR 3 TON  
MACHINE ]



[ FOR 4-5 TON  
MACHINE ]



[ FOR 7-8 TON  
MACHINE ]



[ FOR 10-14 TON  
MACHINE ]



[ FOR 20-22 TON  
MACHINE ]



## ABOUT US

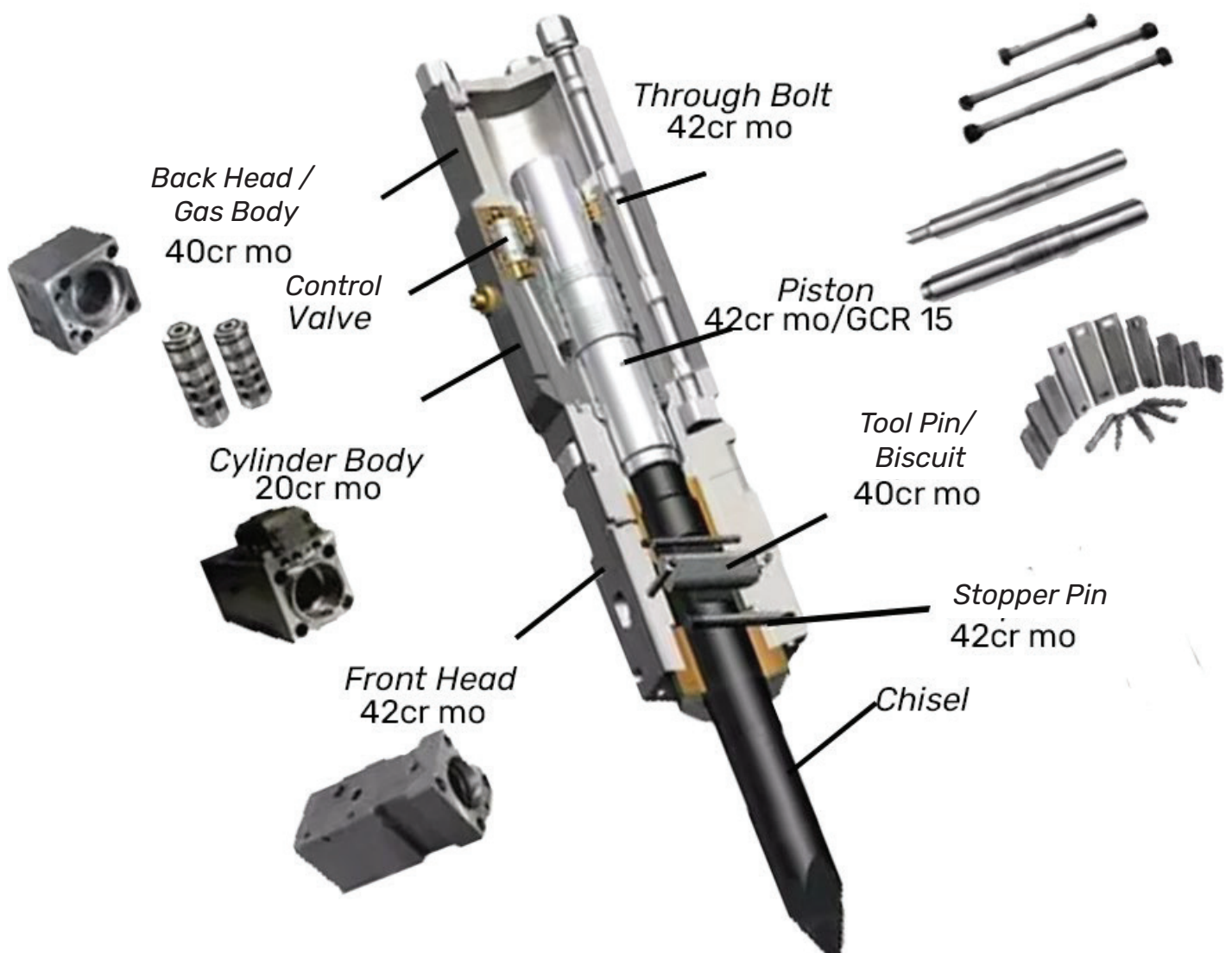
YantraLive is an Asia-based B2B platform for Heavy Equipment Owners. We are redefining heavy equipment ownership, by building industry first solutions to trade pre-owned equipment, helping owners maintain their equipment by supplying the right parts and services on time. Yantra Live was conceived in 2018 in response to the inefficiencies observed in the Heavy Equipment ownership throughout its life cycle. Our mission is to Eliminate Downtime & Idle time of Heavy Equipment through technology-led Innovations and build an ecosystem for heavy equipment related solutions.

We now introduce **Heavy Duty Rock Breakers** for every need, for every machine under our brand name **VAJRA**.



# VAJRA

## POWER CELL SPECIFICATIONS



# Standard Specifications

ITEM		UNIT							
			VJ40	VJ43	VJ50	VJ81	VJ121	VJ131	VJ151
Powercell Weight	With Chisel	Kg	151	208	471	911	1283	1443	1924
		Lb	333	459	1038	2008	2829	3181	4242
Total Weight	Side type	Kg	250	360	765	1740	2413	2650	3580
		Lb	551	794	1687	3836	5320	5842	7885
	Top type	Kg	298	375	810	1780	2538	2865	3600
		Lb	657	827	1785	3922	5592	6310	7930
	Box type	Kg	320	430	870	1830	2780	2990	3830
		Lb	644	948	1918	4035	6131	6605	8450
Required Oil Flow		ℓ/min	30~60	30~60	80~110	120~180	180~240	200~260	210~290
		gal/min	10.6~18.5	13.2~23.8	21.1~29.1	31.7~47.6	47.6~63.4	50.8~68.7	55.5~76.6
Operating pressure		kg/cm <sup>2</sup>	95~130	100~130	150~170	160~180	170~190	170~190	170~190
		psi	1565~1991	1707~2134	2134~2418	2276~2560	2276~2560	2276~2560	2276~2560
Impact Rate		BPM	550~950	550~950	450~700	350~600	300~400	280~370	200~320
Hose Diameter		in	1/2	1/2	3/4	1	1 1/4	1 1/4	1 1/4
Tool Diameter		mm	68	75	100	140	155	165	175
		in	2.7	3.0	3.9	5.5	6.1	6.5	6.9
Applicable Excavator		m <sup>3</sup>	0.15~0.3	0.2~0.35	0.4~0.6	0.7~0.9	1.1~1.4	1.2~1.7	1.4~2.0
		ton	4~6	6~9	9~16	18~25	28~35	30~45	40~55



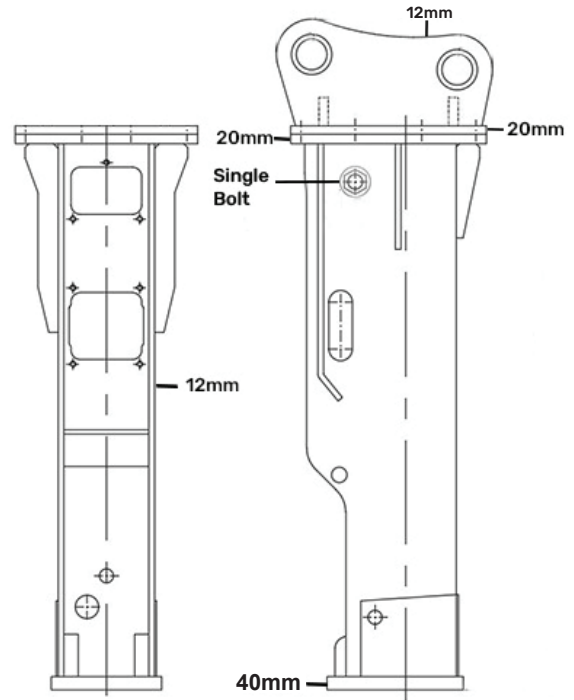
# Difference Between Vajra Rock Breaker And Other Rock Breakers In The Market

<b>VAJRA</b>	<b>OTHER BREAKERS</b>
<ol style="list-style-type: none"> <li>1. Perfectly engineered power cell which performs seamlessly, hence low maintenance.</li> <li>2. Strong &amp; Thick outer body with low wear &amp; tear.</li> <li>3. All core parts are made of high quality alloy steel.</li> <li>4. Comes with a manufacturing warranty of 1 year. * NOTE: Warranty Parts are FRONT HEAD , PISTON &amp; PISTON BODY.</li> <li>5. Quick Warranty Support.</li> <li>6. Free service engineer support during warranty.</li> <li>7. We have all spare parts available.</li> <li>8. Breaker comes with 42 CR chisels. * VJ20 &amp; VJ30 comes with 40CR chisels.</li> </ol>	<ol style="list-style-type: none"> <li>1. Lower quality power cell which causes unexpected break-downs.</li> <li>2. Thin and weak outer body for cost cutting.</li> <li>3. There's no quality measures considered during power cell manufacturing.</li> <li>4. There's no manufacturing warranty.</li> <li>5. Delayed/No warranty support as committed.</li> <li>6. No Paid service engineer support.</li> <li>7. Most of the traders don't have their own spare parts inventory to support during break-down.</li> <li>8. Breakers come with lower grade chisels.</li> </ol>

# Body Dimension Difference

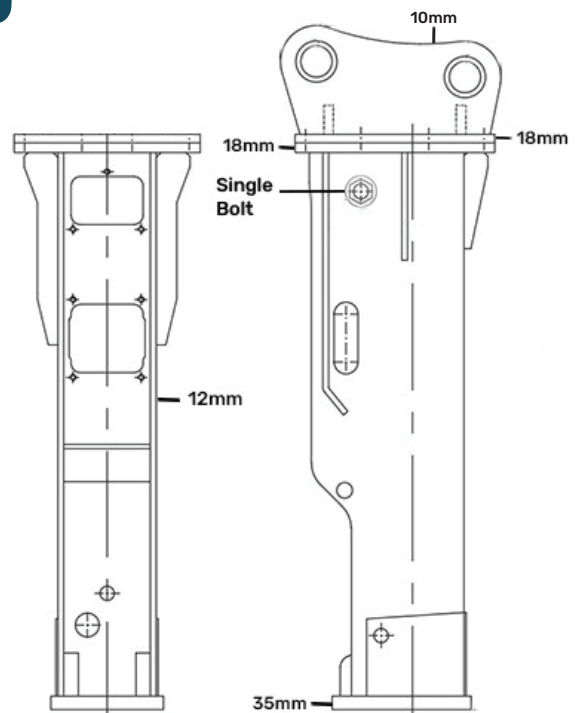
## VJ40

### VAJRA Breaker Outer Body Dimension



## SB40

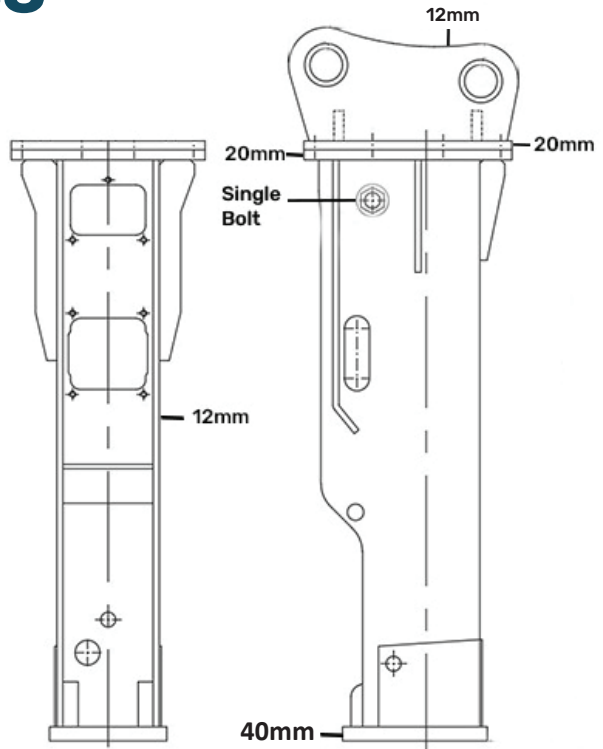
### OTHER Competative Breakers Outer Body Dimension



# Body Dimension Difference

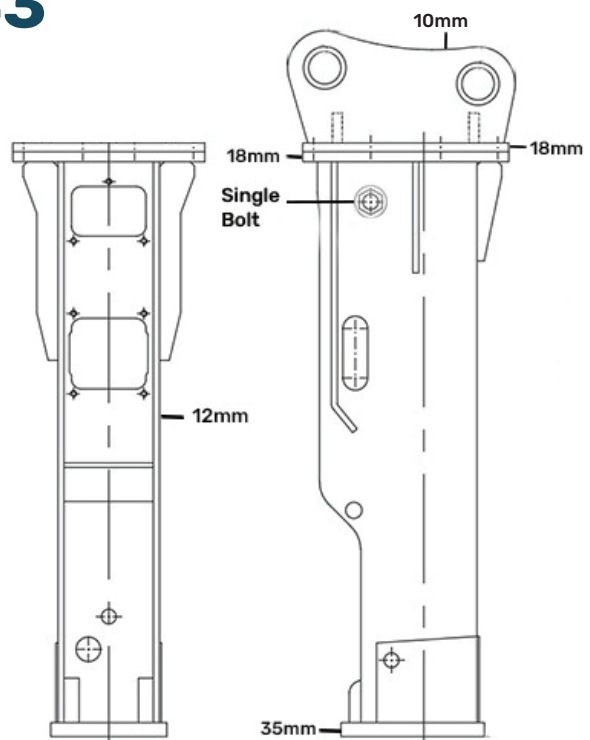
## VJ43

### VAJRA Breaker Outer Body Dimension



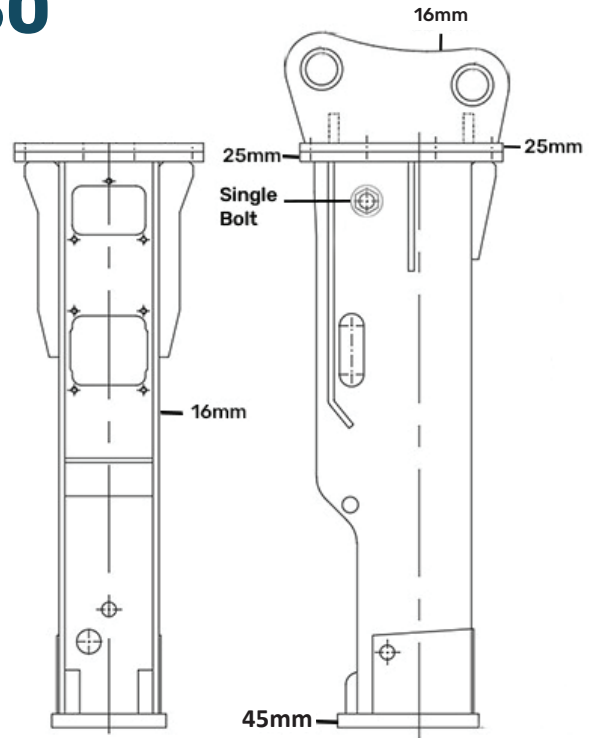
## SB43

### OTHER Competative Breakers Outer Body Dimension



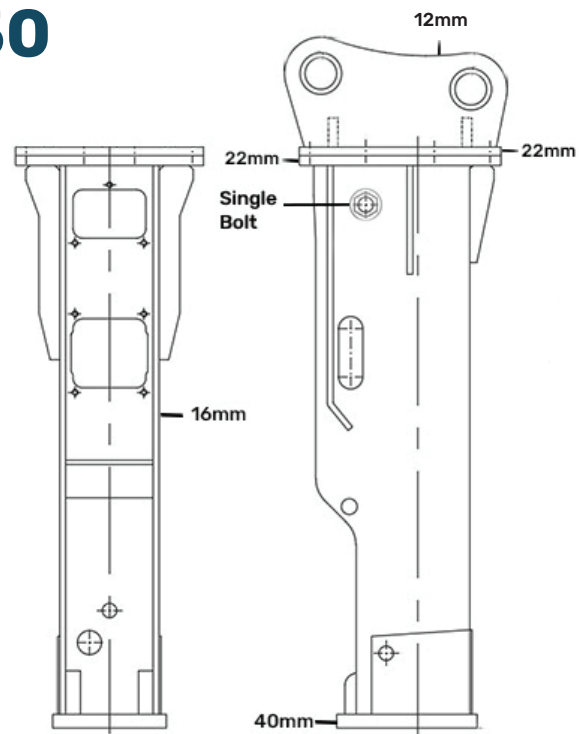
# Body Dimension Difference

## VJ50



## VAJRA Breaker Outer Body Dimension

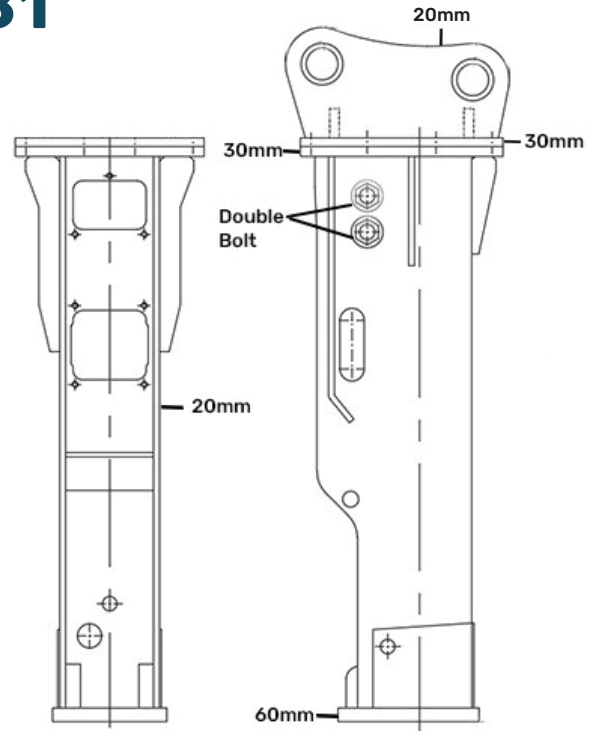
## SB50



## OTHER Competative Breakers Outer Body Dimension

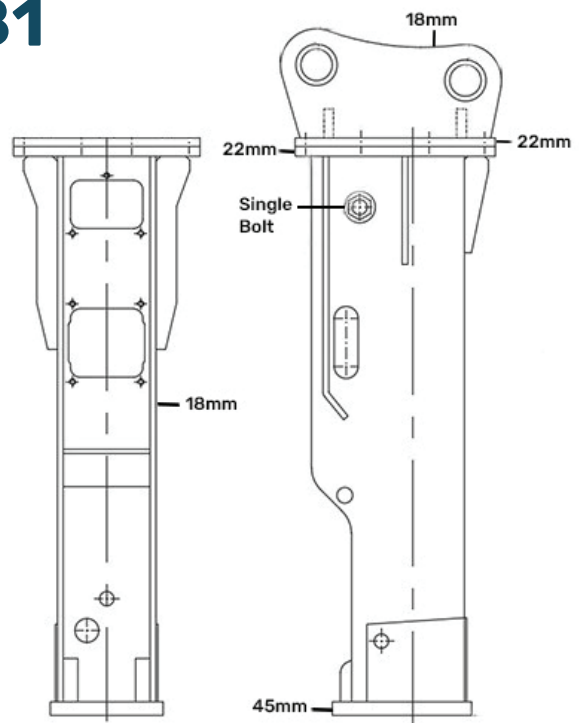
# Body Dimension Difference

## VJ81



## VAJRA Breaker Outer Body Dimension

## SB81



## OTHER Competative Breakers Outer Body Dimension

# VAJRA

## HD Rock Breaker Parts



**BLUNT  
TOOL**



**MOIL  
POINT TOOL**



**WEDGE  
TOOL**



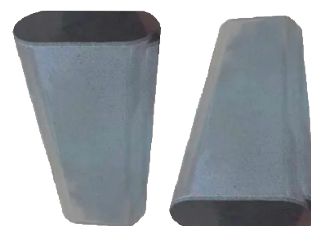
**LOCK PIN**



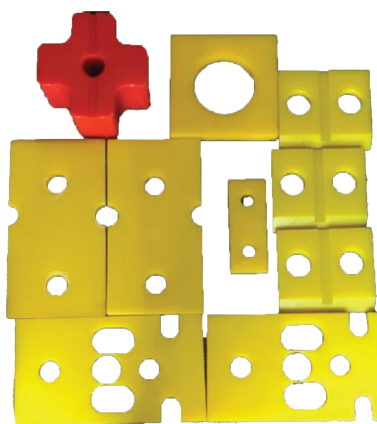
**BREAKER PISTON**



**BISCUIT WITH  
HOLE**



**BISCUIT WITHOUT  
HOLE**



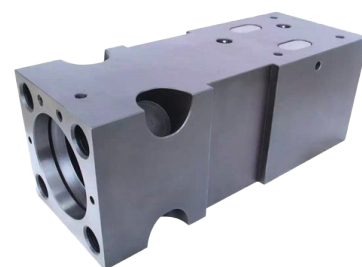
**PADS**



**CHISELS**



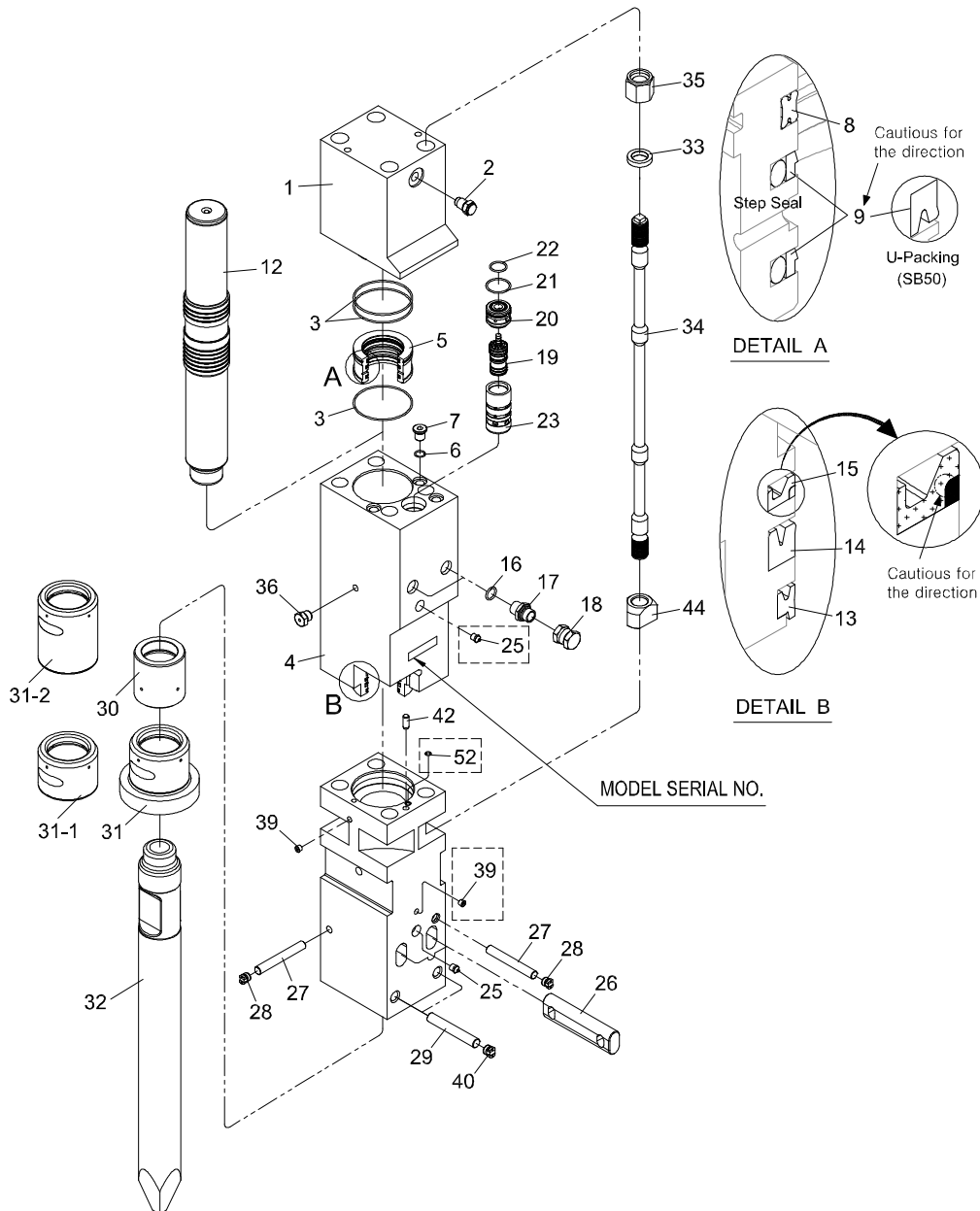
**THROUGH BOLTS**



**FRONT HEAD**



# ROCK BREAKER REGULARLY REQUIRED PARTS



## Rock Breaker Price List

SL NO	BREAKER MODEL	DESCRIPTION	PRICE*	BRAND	CLASS	SKU
1	VJ20	ROCK BREAKER VJ20	82000	VAJRA	Standard	SKU00204544
		ROCK BREAKER VJ20	68000	VAJRA	ECONOMY	SKU00213749
2	VJ30	ROCK BREAKER VJ30	85000	VAJRA	Standard	SKU00204545
		ROCK BREAKER VJ30	70000	VAJRA	ECONOMY	SKU00213750
3	VJ40	ROCK BREAKER VJ40	100000	VAJRA	Standard	SKU00203987
		ROCK BREAKER VJ40	85000	VAJRA	ECONOMY	SKU00213744
4	VJ43	ROCK BREAKER VJ43	150000	VAJRA	Standard	SKU00203988
		VJ43 ROCKBREAKER ASSEMBLY	100000	VAJRA	ECONOMY	SKU00213745
5	VJ50	ROCKBREAKER ASSEMBLY	250000	VAJRA	Standard	SKU00203989
		ROCKBREAKER ASSEMBLY	210000	VAJRA	ECONOMY	SKU00213748
6	VJ81	VJ81 ROCKBREAKER ASSEMBLY	400000	VAJRA	Standard	SKU00203983
		ROCK BREAKER VJ81	355000	VAJRA	ECONOMY	SKU00213743

\*Note: The above prices are excluding GST (18%)



## 7 - 8 Ton Rock Breaker Parts Price List

SL NO.	BREAKER MODEL	DESCRIPTION	PRICE*	BRAND	SKU
1	VJ43	QUICK COUPLER	68000	IMPORTED	SKU00218455
		VJ43 BLUNT CHISEL 40CR	2800	VAJRA	SKU00201981
		VJ43 BLUNT CHISEL 42CR	3500	VAJRA	SKU00201982
		VJ43 WEDGE CHISEL 40CR	2800	VAJRA	SKU00205040
		VJ43 WEDGE CHISEL 42CR	3500	VAJRA	SKU00205041
		BISCUIT LOCKING PIN	100	IMPORTED	SKU00218441
		BISCUIT	450	IMPORTED	SKU00218442
		ROCKBREAKER BUSH SET	2700	IMPORTED	SKU00218443
		ROCKBREAKER FRONT HEAD	32000	IMPORTED	SKU00218444
		ROCKBREAKER PISTON	10000	IMPORTED	SKU00218445
		ROCKBREAKER THROUGH BOLT	950	IMPORTED	SKU00218446
		GAS CHARGING KIT	1200	IMPORTED	SKU00218447
		GAS CHARGING VALVE	300	IMPORTED	SKU00218448
		GAS CYLINDER 4KG	3100	IMPORTED	SKU00218449
		BALL VALVE	850	IMPORTED	SKU00218450
		RBC KIT FOR EXCAVATOR WITH RETURN LINE FILTER	45000	IMPORTED	SKU00218462
		3DX RBC KIT WITH FDV (SOLENOID)	45000	IMPORTED	SKU00218462
		ROCKBREAKER END HOSE	2400	IMPORTED	SKU00218451
PAD SET WITH PLUS PAD	2700	IMPORTED	SKU00218452		

\*Note: The above prices are excluding GST (18%)

## 10 - 14 Ton Rock Breaker Parts Price List

SL NO.	BREAKER MODEL	DESCRIPTION	PRICE*	BRAND	SKU
1	VJ50	QUICK COUPLER	85000	IMPORTED	SKU00218722
		VJ50 BLUNT CHISEL 42CR	7000	VAJRA	SKU00201986
		VJ50 BLUNT CHISEL 40CR	6750	VAJRA	SKU00205042
		VJ50 WEDGE CHISEL 40CR	6750	HHQ	SKU00201987
		VJ50 WEDGE CHISEL 42CR	7000	HHQ	SKU00201988
		BISCUIT WITH HOLE	850	IMPORTED	SKU00218723
		BISCUIT LOCKING PIN	150	IMPORTED	SKU00218724
		BISCUIT WITHOUT HOLE	750	IMPORTED	SKU00218725
		ROCKBREAKER BUSH SET	4500	IMPORTED	SKU00218726
		ROCKBREAKER FRONT HEAD	42000	IMPORTED	SKU00218727
		ROCKBREAKER PISTON	13500	IMPORTED	SKU00218729
		ROCKBREAKER THROUGH BOLT	1500	IMPORTED	SKU00218728
		GAS CHARGING KIT	1200	IMPORTED	SKU00218730
		GAS CHARGING VALVE	300	IMPORTED	SKU00218731
		GAS CYLINDER 8KG	4500	IMPORTED	SKU00218732
		BALL VALVE	900	IMPORTED	SKU00218733
		PIPING KIT WITH RETURN LINE FILTER	50000	IMPORTED	SKU00218932
		ROCKBREAKER END HOSE	2800	IMPORTED	SKU00218734
PAD SET WITH PLUS PAD	9500	IMPORTED	SKU00218735		

\*Note: The above prices are excluding GST (18%)

## VJ81 Rock Breaker Parts Price List

SL NO.	BREAKER MODEL	DESCRIPTION	PRICE*	BRAND	SKU
1	VJ81	20T QUICK COUPLER	98000	IMPORTED	SKU00218170
		CHISEL BLUNT 140*1300 40CR	14000	HHQ	SKU00201941
		VJ81 BLUNT CHISEL 40CR	14000	HHQ	SKU00201941
		VJ81 BLUNT CHISEL 40CR	14500	VAJRA	SKU00203991
		VJ81 BLUNT CHISEL 42CR	15600	HHQ	SKU00201942
		VJ81 BLUNT CHISEL 42CR	15600	VAJRA	SKU00203992
		VJ81 WEDGE CHISEL 40CR	14000	HHQ	SKU00201957
		VJ81 WEDGE CHISEL 42CR	15000	HHQ	SKU00201970
		VJ81 BISCUIT WITHOUT HOLE	1000	VAJRA	SKU00203993
		VJ81 BISCUIT LOCKING PIN	200	IMPORTED	SKU00217277
		VJ81 BISCUIT WITH HOLE	1900	IMPORTED	SKU00217886
		VJ81 ROCKBREAKER BUSH SET	6500	IMPORTED	SKU00217278
		VJ81 ROCKBREAKER FRONT HEAD	52000	VAJRA	SKU00203994
		VJ81 ROCKBREAKER PISTON	18000	VAJRA	SKU00203995
		VJ81 ROCKBREAKER THROUGH BOLT	2500	VAJRA	SKU00203990
		VJ81 ROCKBREAKER SIDE BOLT	1300	VAJRA	SKU00216787
		VJ81 ROCKBREAKER SEAL KIT	1200	PARKER	SKU00216579
		VJ81 GAS CHARGING KIT	1200	IMPORTED	SKU00217279
		VJ81 GAS CHARGING VALVE	300	IMPORTED	SKU00217280
		VJ81 GAS CYLINDER 8KG	4500	IMPORTED	SKU00217281
		20T BALL VALVE 3/4"	1100	IMPORTED	SKU00217282
		20T PIPING KIT WITH RETURN LINE FILTER	55000	IMPORTED	SKU00208607
		20T ROCKBREAKER END HOSE WITH SPRING	3500	IMPORTED	SKU00217874
		PIPING KIT WITH RETURN LINE FILTER	55000	IMPORTED	SKU00208607
VJ81 PAD SET WITH PLUS PAD	12500	IMPORTED	SKU00217283		

\*Note: The above prices are excluding GST (18%)

## Other Rock Breaker Spare Parts

### MB1500 Rock Breaker Parts Price List

SL NO.	BREAKER MODEL	DESCRIPTION	PRICE*	BRAND	SKU
1	MB1500	MB1500 ROCKBREAKER SEAL KIT	1200	PARKER	SKU00312676
		MB1500 ROCKBREAKER THROUGH BOLT	2500	VAJRA	SKU00312677
		MB1500 BISCUIT WITH OUT HOLE	1000	IMPORTED	SKU00312678
		CHISEL BLUNT 135*1300 40CR	14300	HHQ	SKU00201989
		CHISEL BLUNT 135*1300 42CR	15800	HHQ	SKU00201990
		CHISEL WEDGE 135*1300 40CR	14300	HHQ	SKU00201991
		CHISEL WEDGE 135*1300 42CR	15000	HHQ	SKU00201992

\*Note: The above prices are excluding GST (18%)

### DMB210 Rock Breaker Parts Price List

SL NO.	BREAKER MODEL	DESCRIPTION	PRICE*	BRAND	SKU
1	DMB210	DMB210 THROUGH BOLT	2500	IMPORTED	SKU00312679
		DMB210 SEAL KIT	1200	IMPORTED	SKU00312680
		CHISEL BLUNT 135*1300 40CR	14300	HHQ	SKU00201997
		CHISEL BLUNT 135*1300 42CR	15000	HHQ	SKU00201998
		CHISEL WEDGE 135*1300 40CR	14300	HHQ	SKU00201999
		CHISEL WEDGE 135*1300 42CR	15000	HHQ	SKU00202000

\*Note: The above prices are excluding GST (18%)



## YANTRALIVE PARTS TECHNOLOGY PVT LTD.

#58, Shed-E , Near RMC Yard Yeshwanthpur Bengaluru, Karnataka 560042, Bangalore  
Karnataka 560022 India, GSTIN 29AAACY9926C1Z1 Ph: +91-7676244444

# ROCKBREAKER WARRANTY POLICY

## 1. Basic Policy for Standard Warranty

**(1) The standard warranty period for YL hydraulic breaker & attachments is 12 months from the YL final delivery date to the end-user.** Surely, the customer has to give proof or establish the fact of final delivery by written or printed evidence (Installation Report) to YantraLive. This final delivery date to the end-user should be within 6 months from date of Bill.

**(2) If the dealer didn't give any proof to YantraLive to verify the fact of delivery to the end-user, YantraLive should settle the period of warranty to be 12 months from the shipping date to date of invoicing.** Warranty shall not be applied to the wearing and consumable parts, except that the problems concerned are caused by the faults of the manufacturer.

It is strongly recommended that the genuine YantraLive spare parts, supplied from YantraLive, be used at all times.

## 2. Warranty Claim

Each claim must be reported separately on a standard Warranty Claim Form or by using a product report within 15 days from the date of repair which includes following;

- Model No. and Serial No. of the breaker body.
- Serial No. and Part No. of the defective parts.
- Date of final delivery and date of defect.
- Operating hours(not evidence of claim, just for reference ).
- Clear description of the fault.
- List of the replaced parts.
- Detailed pictures and images concerned defected part.
- Any other evidences and reference materials.



### 3. No Cover Wearing Parts such as below.

- All kinds of tools including moil point, chisel (H/V-wedge), conical type and blunt type.
- All kinds of seals and rings.
- All kinds of springs and dampers.
- All kinds of bolts and plugs, through bolts and side bolts.

### 4. The below-mentioned causes shall be excluded from the warranty service.

- Operation faults, mistake, misuse by users.
- All wearing parts like tools, seal kits, etc.

### 5. Warranty Period for Main parts

No.	PART NAME	MONTHS	REMARKS
1	Back Head	No	
2	Piston Body	12	
3	Front Head	12	
4	Accumulator	No	
5	Valve Assy	No	
6	Piston	12	Under the circumstance of crack exclude scratch & rust
7	Seal Retainer	No	
8	Rod Pin	No	
9	Stop Pin / Front Cover Pin	No	
10	Through Bolt Assy	No	
11	Side Bolt Assy	No	
12	Front Cover	No	
13	Ring Bush	No	
14	Tool (Moil, H/V-Wedge, Conical and Blunt Type )	No	
15	Seal Kit	No	
16	Diaphragm Plate	No	
17	Shell including Frame(Side, Top, BH Type), Housing(Box-Silenced Type), Mount Cap	No	Weld crack is not covered under the warranty Pins & Bushes are not covered under the warranty
18	Mount Pin & Bush	No	
19	Dampers	No	

\*\* All warranty parts shall be replaced by To-Pay basis. Other minor costs, including labor, to be supported by customers.